

NimbleMTP – Quick User Guide

Topics

Introduction

Minimum Requirement

Connection

Introduction

**Global Data Feeds is now authorized data vendor
for MTPredictor – 32 & 64 bit**

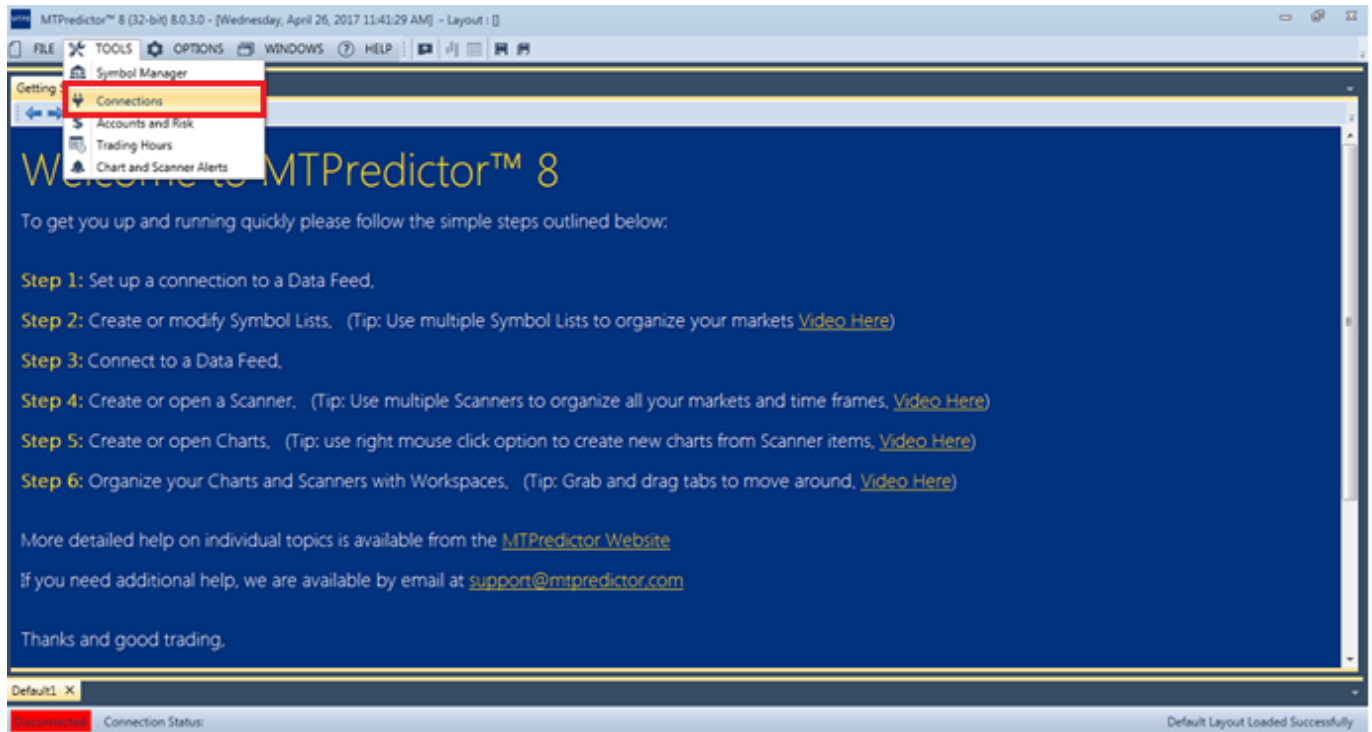
Minimum Requirement

MTPredictor 8 or later

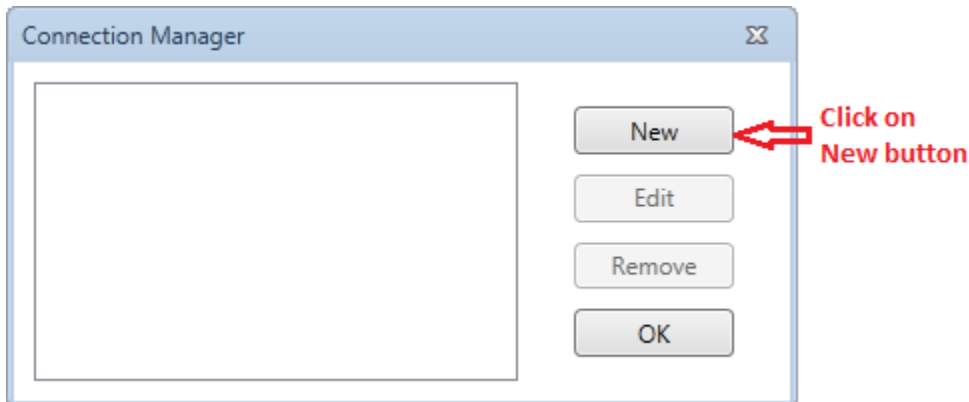
Connection

To use our data with MTPredictor, no need to install our data products NimbleMTPPro or NimbleMTPLite. You just need to install the latest version of MTPredictor and use our data directly.

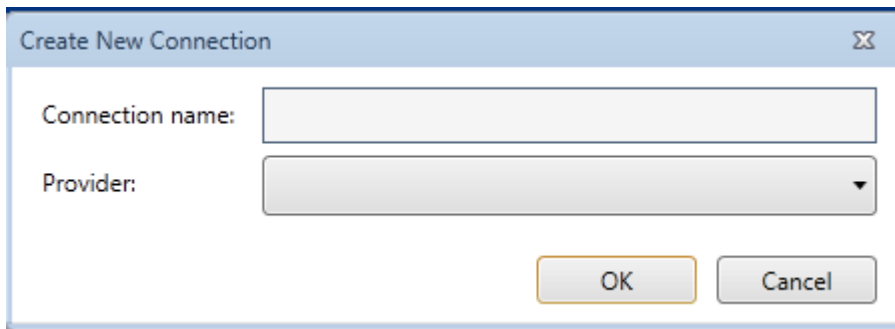
- 1) Start MTPredictor (32 or 64 bit).
- 2) Go in TOOLS >> Connection.



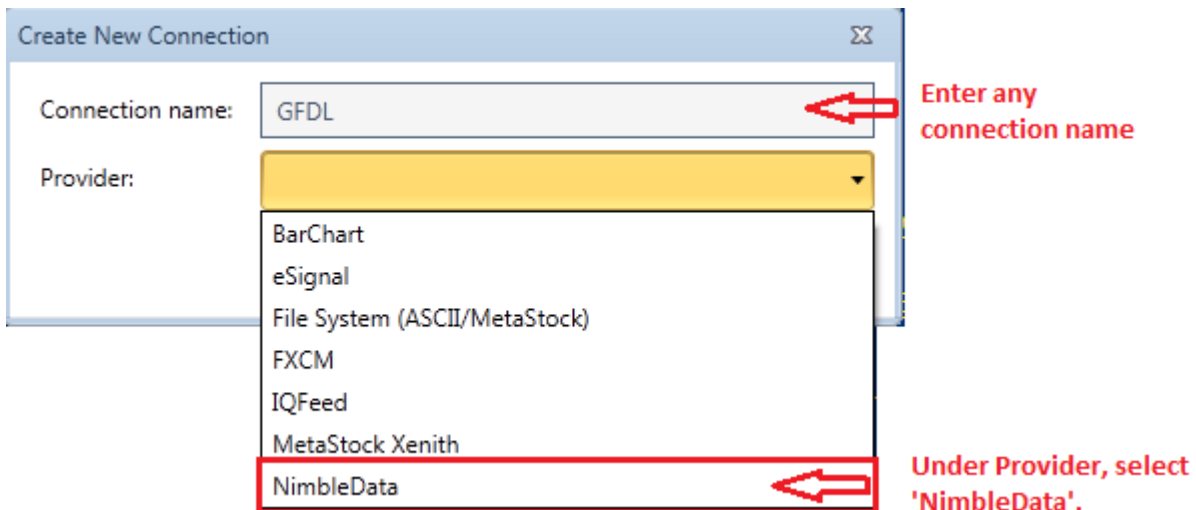
In connection you will get the window as per below screenshot:



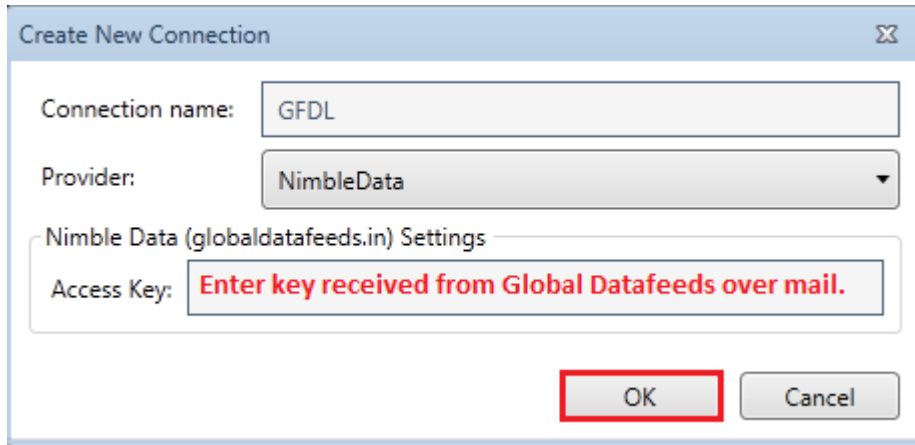
After clicking on NEW button, you will get window as per below screenshot:



In 'Connection name' you can enter any name e.g. "GFDL" and select provider as "NimbleData".



For 'Access Key', you need to enter the key received from Global Datafeeds over mail (paid or trial) and click on OK button.



Create New Connection

Connection name: GFDL

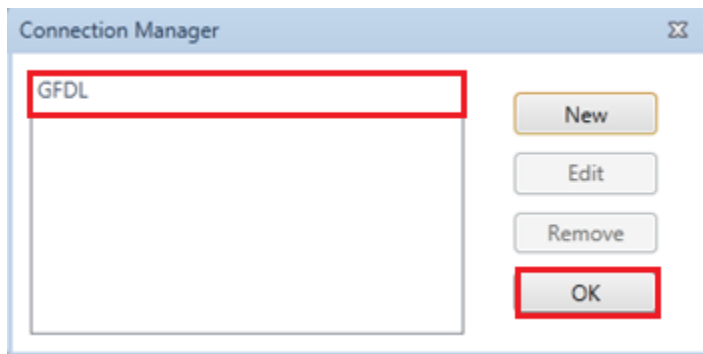
Provider: NimbleData

Nimble Data (globaldatafeeds.in) Settings

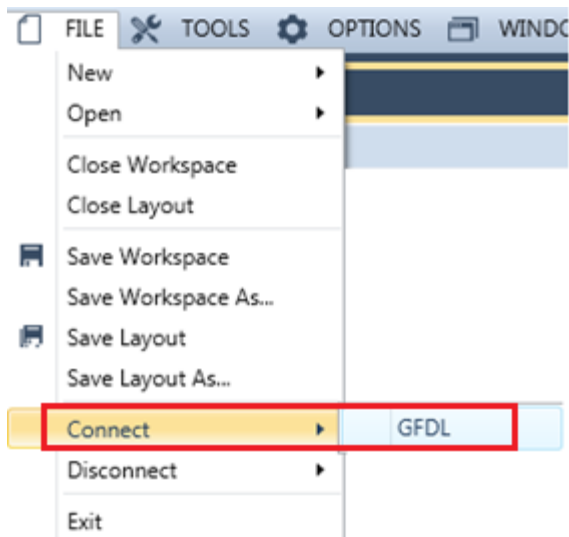
Access Key: Enter key received from Global Datafeeds over mail.

OK Cancel

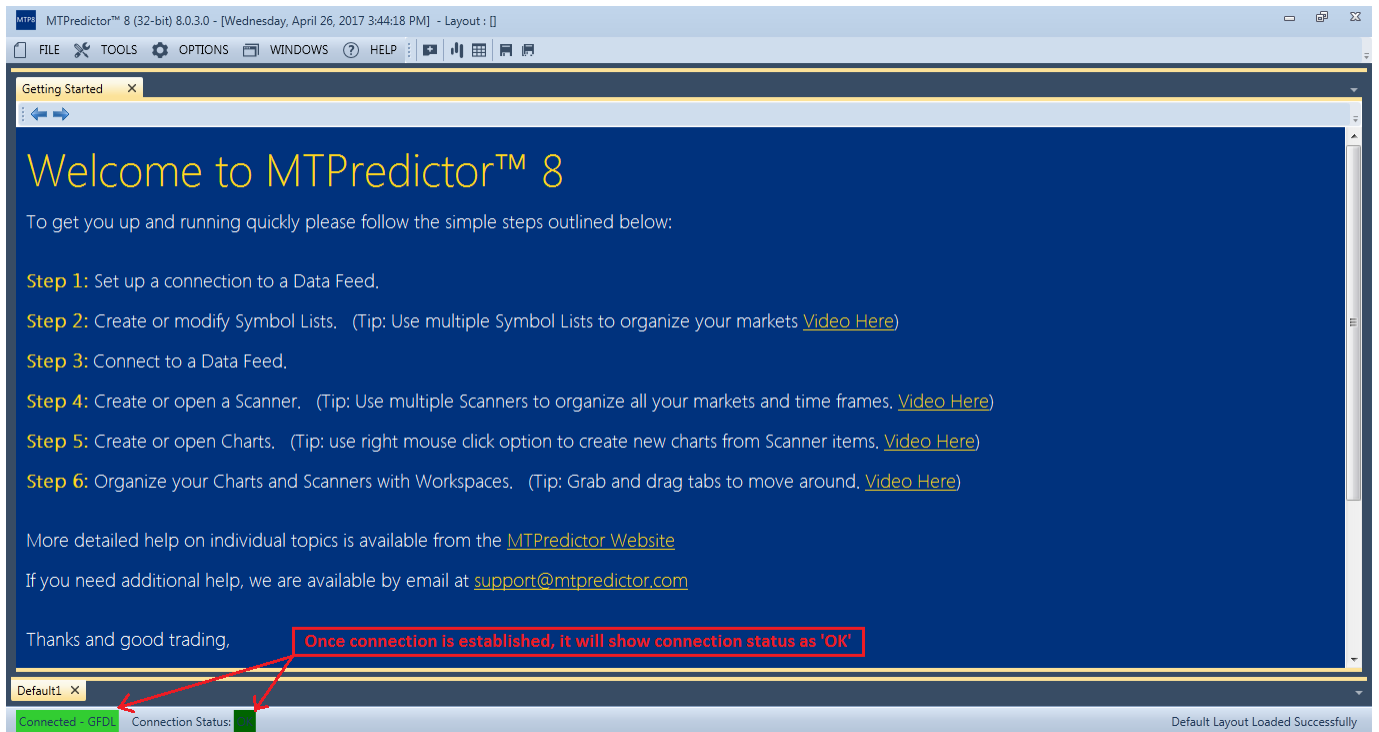
After clicking on "OK" button, you can see the connection name 'GFDL' in Connection Manager.



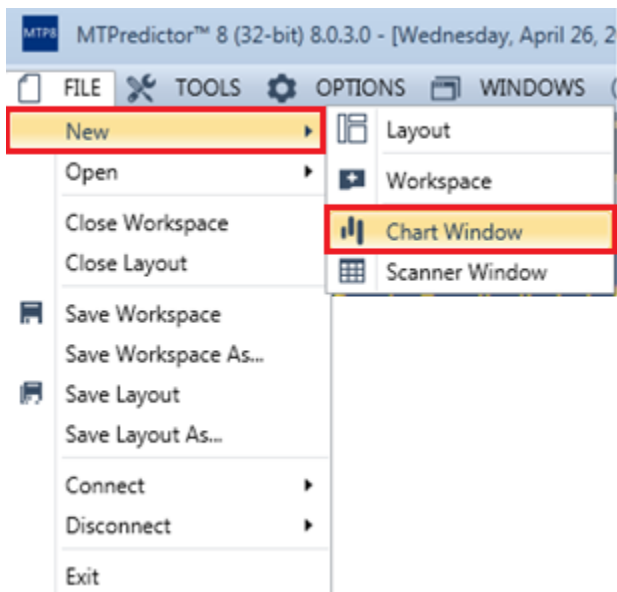
Now to connect to our server, go in menu File >> Connect and select 'GFDL' same as below screenshot:



After connecting to GFDL you will get the the connection established status here:



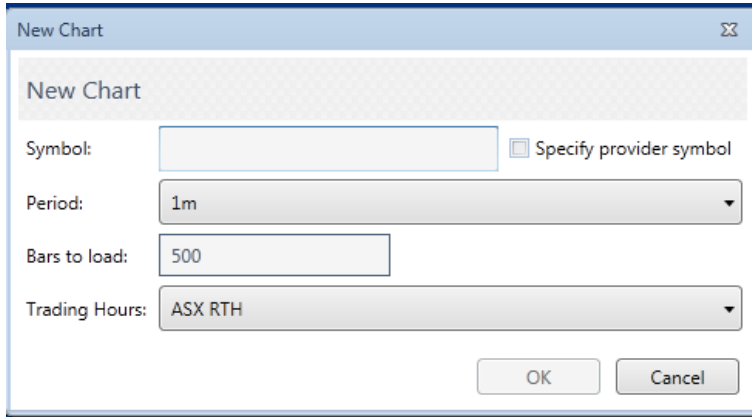
Once connection is established, goto menu File >> New >> Chart Window to open the chart for required symbol.



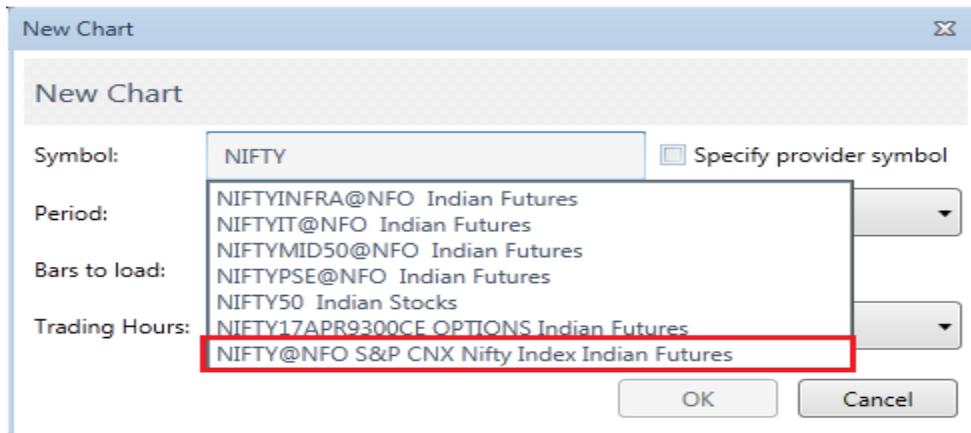
Symbol : Enter the symbol name and it will popup the list of symbol with same name. Select the required symbol from list.

Period : You can select any period for which you want to view the chart.

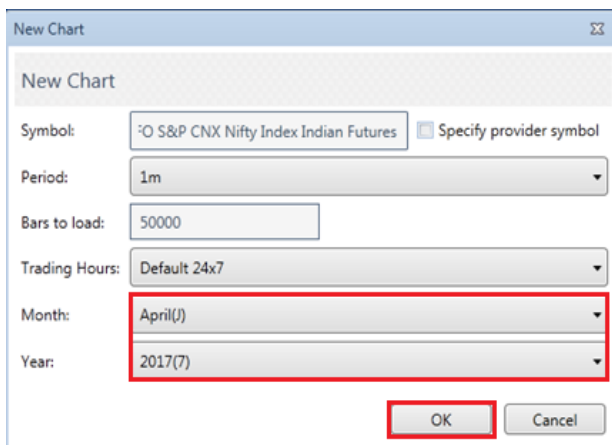
Bars to load : You can enter it as 50000.



Enter the required symbol you will get the related symbol list in dropdown,select the symbol of required exchange.

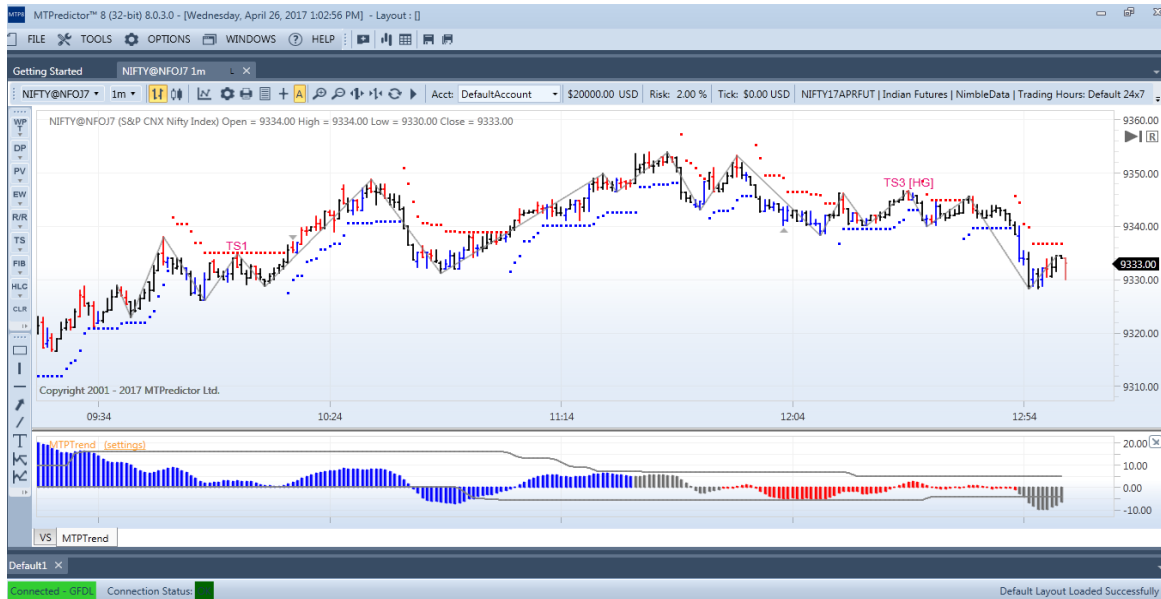


Keep Trading Hours as 'Default 24x7' and Do the settings as per given screenshot.



Select the "Expiry Month " and "Expiry year" of entered symbol.

Once you will click on “OK” button you can see the Realtime chart for entered symbol as per below screenshot.



- To know how to add symbol individually please refer:
<http://www.mtpredictor.com/data/mtpredic/uploads/video/MTP8/MTP8-SymbolManager1/MTP8-SymbolManager1.html>
- You can also add symbol in bulk please refer:
<http://www.mtpredictor.com/data/mtpredic/uploads/video/MTP8/MTP8-SymbolImport/MTP8-SymbolImport.html>

Thank you very much..